



# For SALE

## Roxberry Park Subdivision Clarence, NY 14217

# McGuire

## Development Co

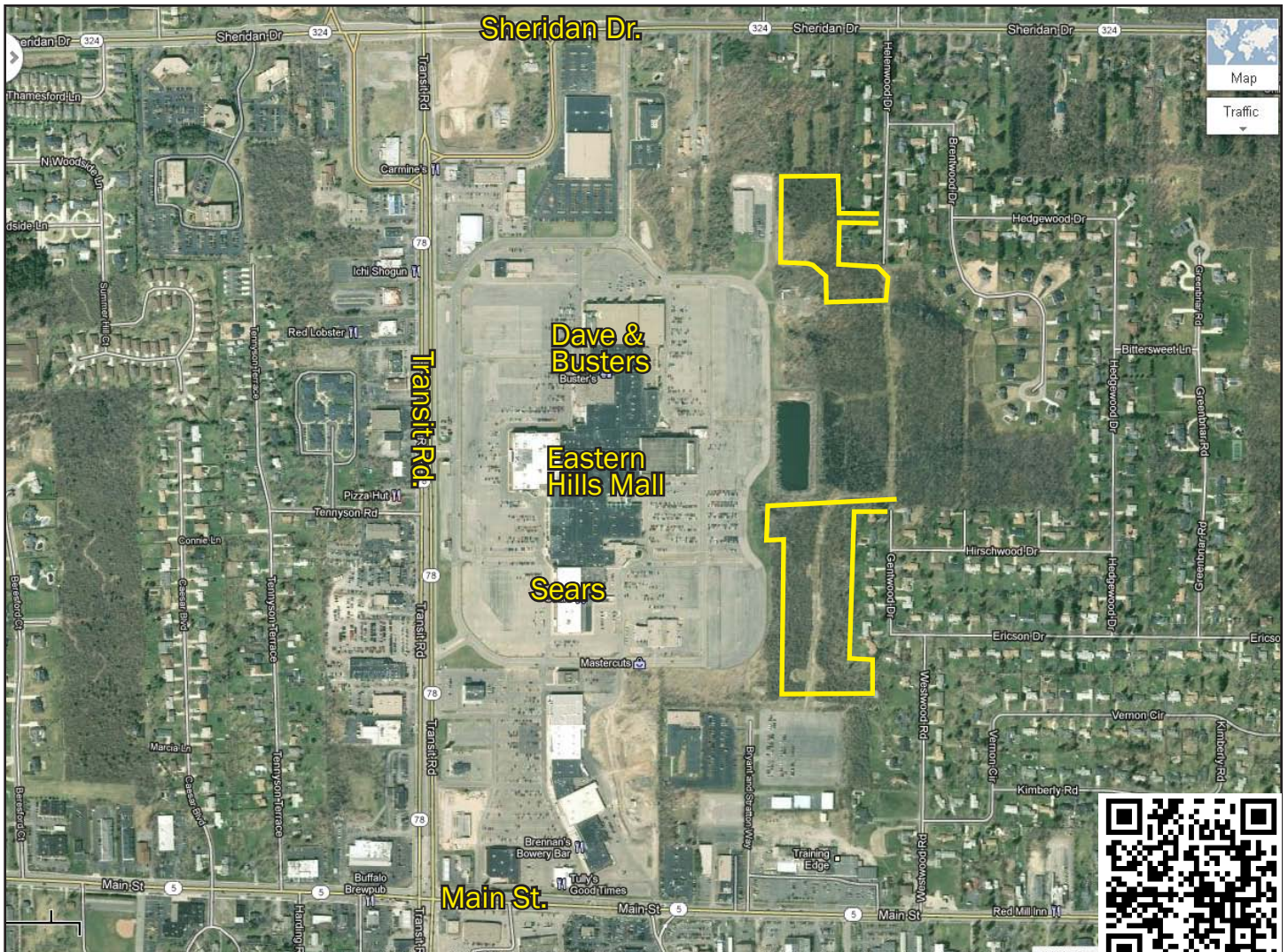
Trust Through Transparency

### Real Estate Services Group

SALE | LEASE | CONSULTING | BROKERAGE DEVELOPMENT

### 13 ACRES OF VACANT LAND

- Erie County Sewer is in place
- 23 Lots are Designed for Subdivision
- Multi Family opportunity Available
- Easement in place for both lots

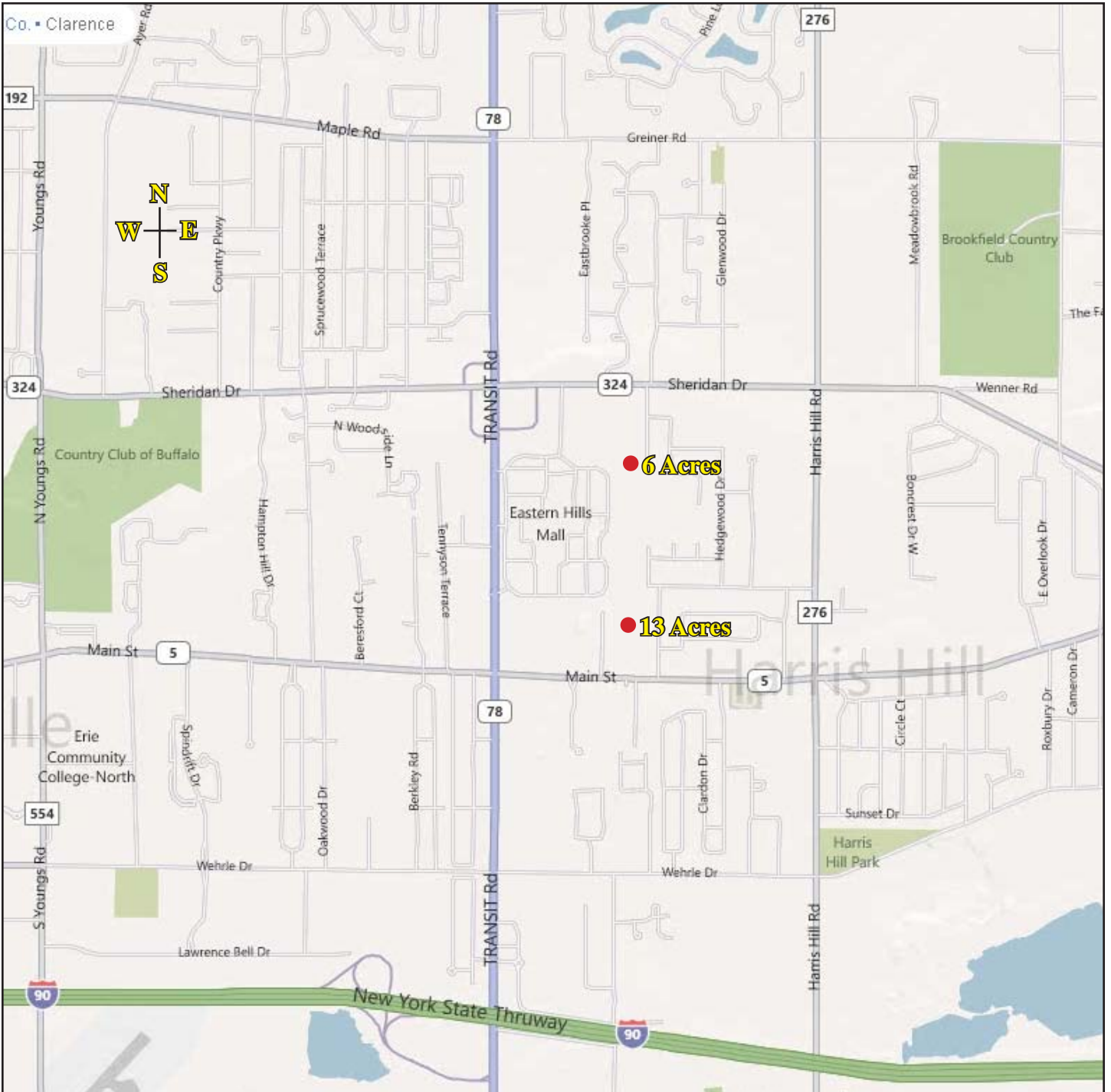


For Smartphones



**Real Estate Services Group**

SALE | LEASE | CONSULTING | BROKERAGE DEVELOPMENT



The information, statements, and figures presented herein are secured from sources we believe authoritative. All offerings subject to errors, prior sales, lease, or withdrawal without notice.

**Contact: Vito Picone (716) 829-1970**  
**www.McGUIREDEVELOPMENT.com**