

McGuire Development Co

**4201 Delaware Ave.
Tonawanda, NY**



AVAILABLE FOR SALE

- 3,342 SQ. FT. CAR WASH
- 900 SQ. FT. BODY SHOP
- +/- .54 ACRE LOT
- LOT SIZE 70 X 332
- CORNER LOCATION
- LOCATED WITHIN CLOSE PROXIMITY TO I-290, I-190 AND I-990
- ASKING PRICE: \$525,000

CONTACT INFORMATION:

Contact: Vito Picone | 716-829-1970
vpicone@mcguiredevelopment.com
www.mcguiredevelopment.com

HONESTY & TRANSPARENCY:

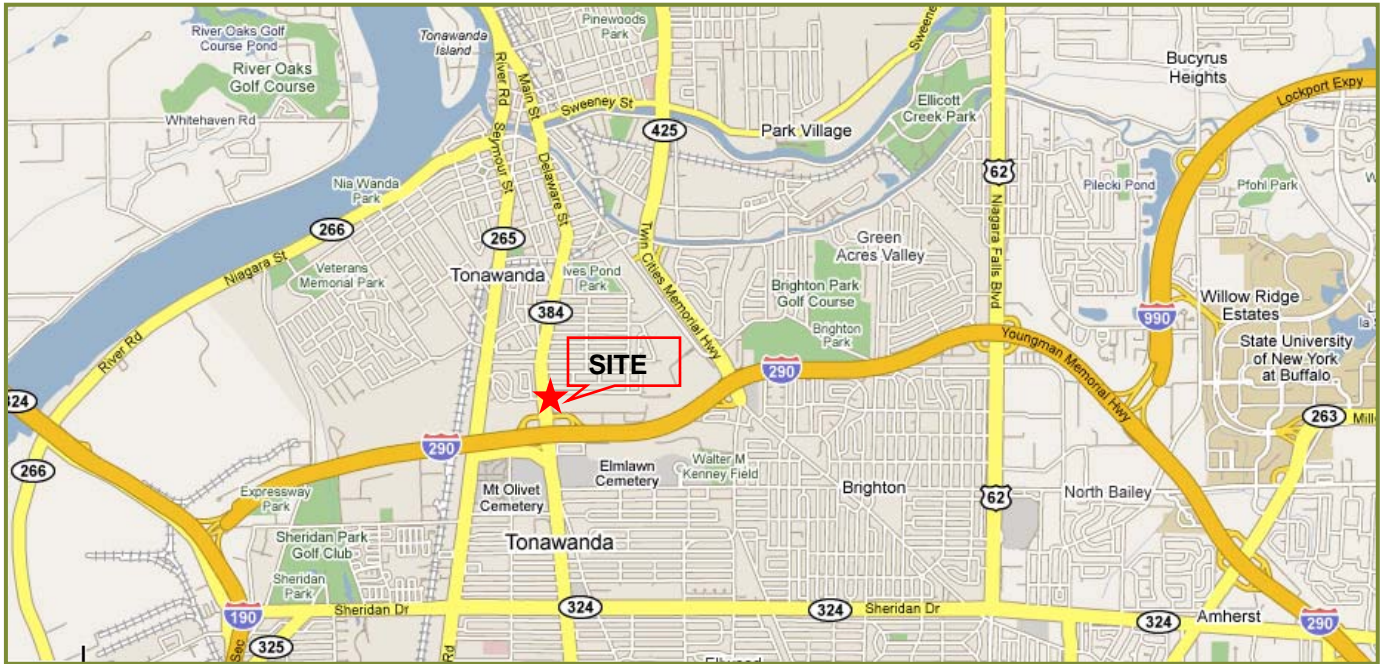
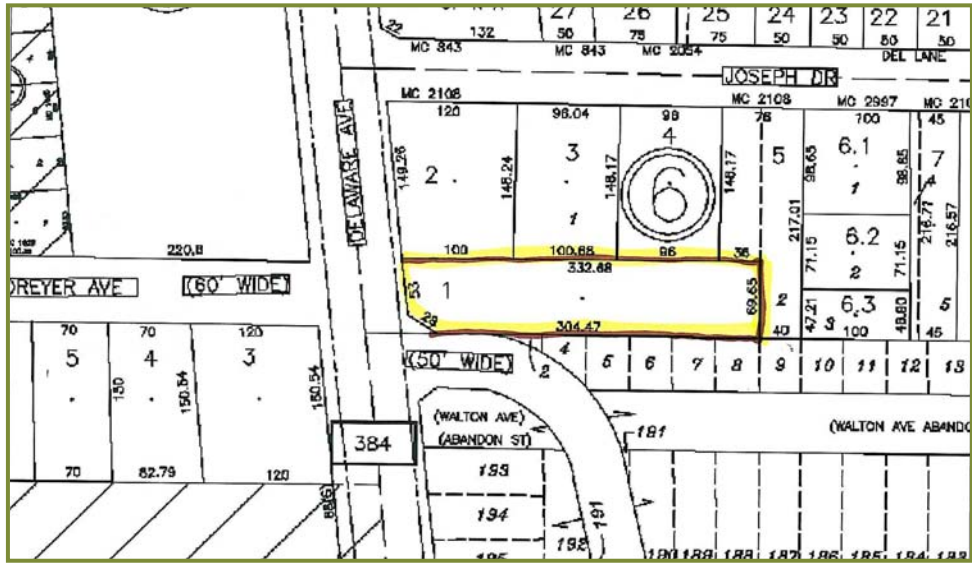
At McGuire Development, we view ourselves as partners, understanding that solid customer service results in long-term success for all parties involved. This philosophy has brought transparency to the development process and set new standards for the real estate industry.

INTEGRITY
Integrity

DEDICATION
Dedication

RESPECT
Respect

The information, statements, and figures presented herein are secured from sources we believe authoritative. All offerings subject to errors, prior sale, lease, or withdrawal without notice



INTEGRITY *Integrity* **DEDICATION** *Dedication* **RESPECT** *Respect*

The information, statements, and figures presented herein are secured from sources we believe authoritative. All offerings subject to errors, prior sale, lease, or withdrawal without notice.